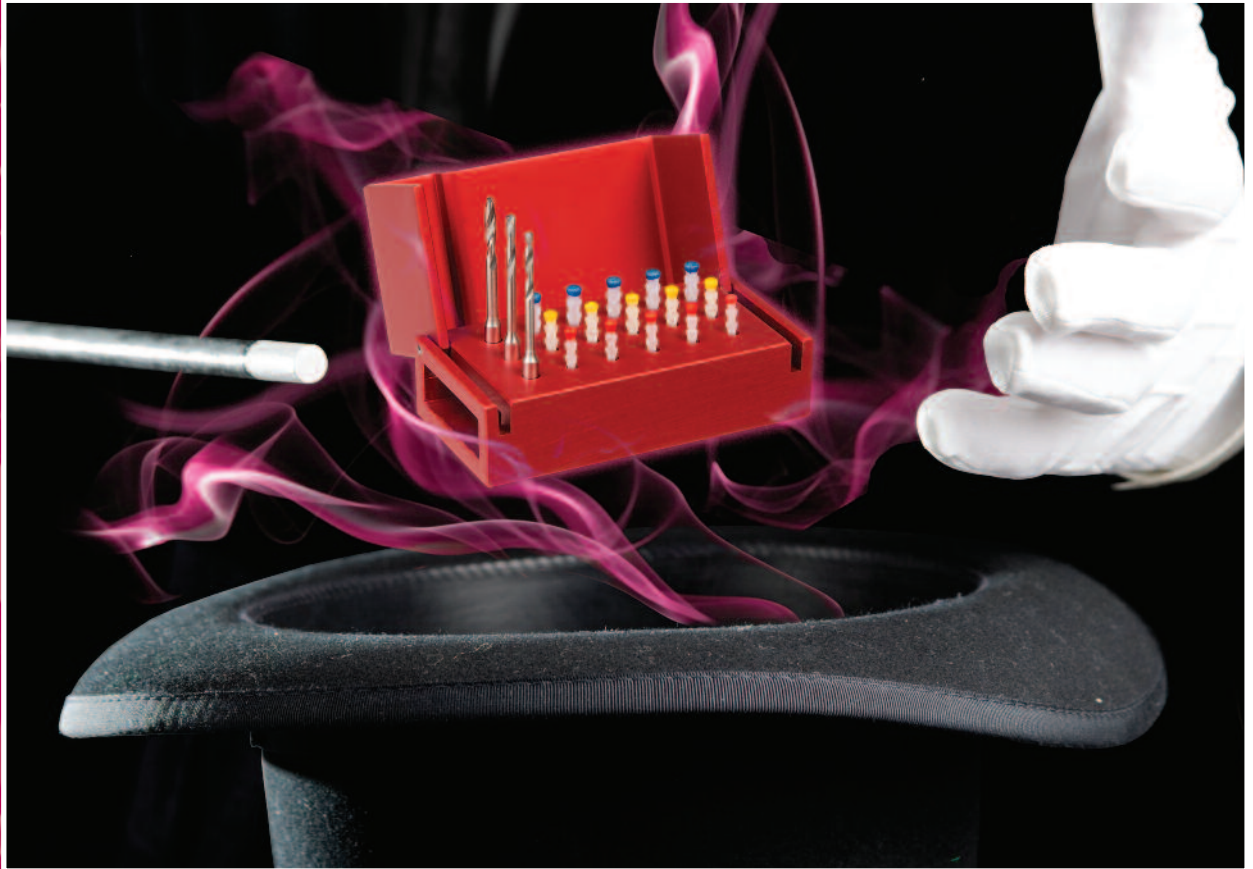


# FibreKleer™ 4X™

Post System

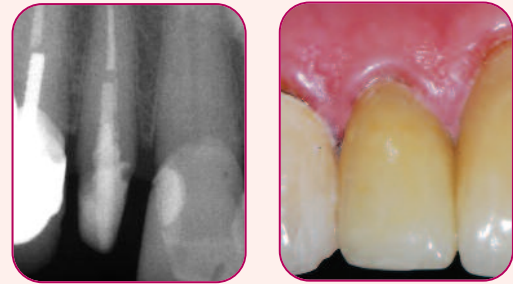


# The FibreKleer™ 4X™ Post System

## Everything you want to see and nothing you don't

New *FibreKleer 4X* Fiber Posts enable you to see what you have been missing with competitor's posts. By combining the proven S-glass fiber technology of *FibreKor*® posts with a proprietary new clear resin matrix, *FibreKleer 4X* Fiber Posts feature outstanding radiopacity (up to 400% of aluminum) creating a new standard of radiopacity for esthetic posts. This means the post is instantaneously identified on a radiograph at placement and at follow up appointments. However, when the post is cemented in the tooth the translucency of *FibreKleer 4X* ensures that the post will not interfere with natural light transmission ensuring beautiful esthetics without the unsightly grey shadow common with metal posts.

## Now you see it, Now you don't



Photos courtesy of Gregori M. Kurtzman, DDS

## Features & Benefits

*FibreKleer 4X* Fiber Posts provide the ultimate in radiopacity, core retention, tooth preservation, esthetics, and size and shape options

- > Radiopacity up to 400% of Al – Post is clearly identified on a radiograph
- > Outstanding core retention – helps to securely retain the prosthesis
- > Ideal flexural modulus – Mimics the properties of the tooth to help minimize root fractures
- > Color coded posts & drills – streamlines the size selection process
- > Translucent glass fibers – Helps create natural looking restorations
- > Multiple sizes and body styles – Enables you to fit the post to the tooth, not the tooth to the post
- > Exceptional value – pay less and get more when you order direct or from your dealer

## More than just looks!

Natural esthetics and superior radiopacity are just two of the benefits that are realized when using *FibreKleer 4X* Fiber Posts. In fact, *FibreKleer 4X* Fiber Posts are designed to preserve the integrity of the remaining tooth structure while simultaneously providing outstanding retention of the core build-up. A precise combination of resin and fiber gives *FibreKleer 4X* Fiber Posts outstanding flexural strength and a dentin-like flexural modulus.

This balance of strength and flexibility results in a post that flexes with the tooth and transmits stress more evenly along the remaining root structure to help drastically minimize the instance of root fractures compared to metal post. Moreover, *FibreKleer 4X* Fiber Posts are available in 3 unique body designs, each in 3 different sizes, to suit individual preferences and to meet the challenges each individual clinical situation presents.



*FibreKleer 4X* Original Post



*FibreKleer 4X* Parallel Post



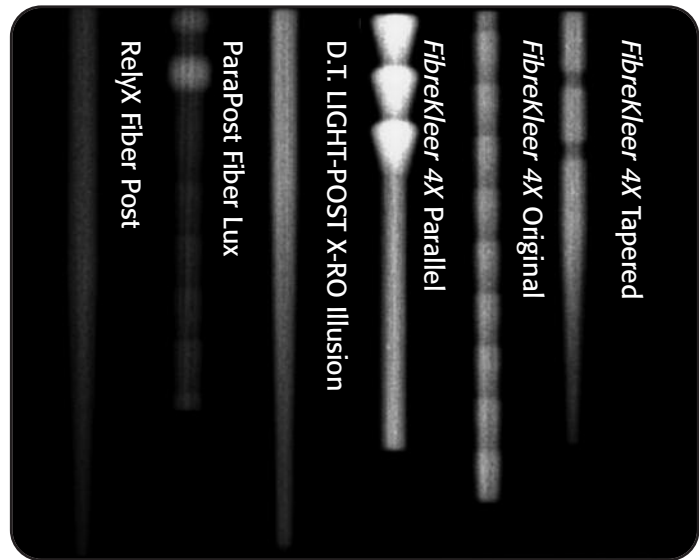
*FibreKleer 4X* Tapered Post

## Now showing

In a study conducted by THE DENTAL ADVISOR, the leading brands of fiber posts along with all three shapes of *FibreKleer 4X* Post were tested to measure their levels of radiopacity. As the radiograph and the data in the chart show, *FibreKleer 4X* Fiber Posts offer the highest level of radiopacity among all posts tested.

Post	Radiopacity, mm Al†
RelyX Fiber Post	2.2
ParaPost Fiber Lux	1.9
D.T. LIGHT-POST X-RO Illusion	3.7
<b><i>FibreKleer 4X</i> Parallel</b>	<b>4.1</b>
<b><i>FibreKleer 4X</i> Original</b>	<b>3.8</b>
<b><i>FibreKleer 4X</i> Tapered</b>	<b>3.9</b>

All trademarks are property of their respective owners.



Radiograph courtesy of THE DENTAL ADVISOR

## Strength where it matters

The sole purpose of a post is to aid in the retention of the core build-up. When a *FibreKleer 4X* Fiber Post is placed it integrates with resin core material, resin cement, and the root to create one structure with similar flexural properties – a monoblock. The end result is a post that safely retains core build-ups while preserving the integrity of the remaining tooth structure. Whereas metal posts may offer sufficient core retention their rigidity conflicts with the properties of the root increasing the potential for root fractures.



Photo courtesy of Dr. Tarun Agarwal Raleigh, NC

## The Study

The results of a 3<sup>rd</sup> party study prove that *FibreKleer 4X* Fiber Posts help prevent root fractures compared to metal posts and a leading fiber post brand. The ability of *FibreKleer 4X* Fiber Posts to preserve and protect roots enables clinicians to retreat and restore the tooth even if the restoration fails. When metal posts fail, teeth are significantly more likely to fracture and retreatment is not an option as extraction would be required.

### Selected Physical Characteristics of Fiber Endodontic Posts

#### Fracture Patterns of Posts

	Strength (Newtons)	Fracture Mode
Metal post	563.5 ± 119.3	7 root fractures, 3 core failures
<i>FibreKleer 4X</i> original	401.5 ± 51.9	1 root fracture, 9 core failures
Fiber Lux	371.6 ± 72.5	2 root fractures, 8 core failures
Rely-X Fiber Post	247.7 ± 56.0	1 root fracture, 8 core failures, 1 post debond
DT Light Illusion XRO	223.4 ± 54.9	6 root fractures, 4 core failures

Mark A. Latta, D.M.D., M.S., March 6, 2011. Full study available upon request.

# FibreKleer™ 4X™

## Post System

### Ordering Information

#### FibreKleer 4X Post System Kits

FibreKleer 4X Parallel Fiber Post Kit	N83A
FibreKleer 4X Tapered Fiber Post Kit	N83B
FibreKleer 4X Original Fiber Post Kit	N83C

Kits include 15 Posts (5 each of 3 sizes), 3 Drills (1 each of 3 sizes), and Translated Instructions

#### FibreKleer 4X Post Refills

##### Parallel Post

1.00mm Post	
1.25mm Post	
1.50mm Post	




##### 30pk Refills

N83AD
N83AE
N83AF

##### 10pk Refills

N83AA
N83AB
N83AC



##### Tapered Post

1.25mm Post	
1.375mm Post	
1.50mm Post	

N83BD
N83BE
N83BF

N83BA
N83BB
N83BC

##### Original Post

1.00mm Post	
1.25mm Post	
1.50mm Post	

N83CD
N83CE
N83CF

N83CA
N83CB
N83CC

#### Drill Refills

##### Parallel & Original Drill Refills

1.00mm Drill	N18DA
1.25mm Drill	N18DB
1.50mm Drill	N18DC

##### Tapered Drill Refills

1.25mm Drill	N81CA
1.375mm Drill	N81CB
1.50mm Drill	N81CC

For more information on our entire line of innovative dental products

visit us at [www.pentron.com](http://www.pentron.com) or call us at **1.800.551.0283**



53 North Plains Industrial Road  
Wallingford, CT 06492

t | 800.551.0283 | 203.265.7397

f | 877.677.8844 w | [www.pentron.com](http://www.pentron.com)

#### "Everything you want to see and nothing you don't"

Radiograph and photo courtesy of Gregori M. Kurtzman, DDS

"Radiopacity of Several Fiber Posts" Radiograph and chart data provided by THE DENTAL ADVISOR

"Strength where it matters" Photo courtesy of Dr. Tarun Agarwal Raleigh, NC

"Selected Physical Characteristics of Fiber Endodontic Posts" Report provided by Mark A. Latta, D.M.D., M.S.

FibreKleer 4X is a trademark owned by Pentron Clinical. FibreKleer 4X is registered with the U.S. PTO and other countries.

All trademarks are property of their respective owners.