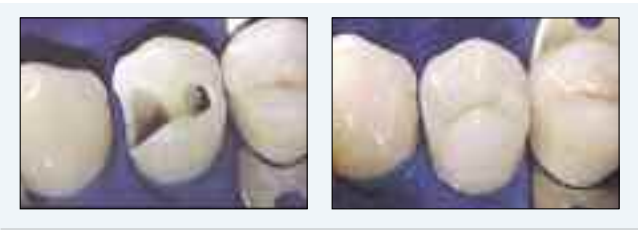


Simile[®]

Nano-Hybrid Composite



Photos courtesy of Dr. Liviu Steier

Ordering Information:

Syringe Refills

A-0	N56AT	B4	N56AO
A1	N56AA	C1	N56AL
A2	N56AB	C2	N56AH
A3	N56AC	C3	N56AK
A3.5	N56AD	C4	N56AP
A4	N56AN	D2	N56AQ
B-0	N56AU	D3	N56AR
B1	N56AE	D4	N56AS
B2	N56AF	Univ. Opaque	N56AI
B3	N56AG	Clear Incisal	N56AJ

Single Dose Refills

A-0	N56BS	B4	N54BN
A1	N56BA	C1	N56BH
A2	N56BB	C2	N56BI
A3	N56BC	C3	N56BJ
A3.5	N56BD	C4	N56BO
A4	N56BM	D2	N56BP
B-0	N56BT	D3	N56BQ
B1	N56BE	D4	N56BR
B2	N56BF	Univ. Opaque	N56BK
B3	N56BG	Clear Incisal	N56BL

Simile 10 Shade Syringe N56A

10 - 4gm Syringes Shades: A1, A2, A3, A3.5, B1, B2, B3, C2,
Opaque Universal, Clear Incisal
Instructions and Accessories

Simile 10 Shade Single Dose N56C

100 - 0.25gm Single Doses Shades: A1, A2, A3, A3.5, B1, B2, B3, C2,
Opaque Universal, Clear Incisal
Instructions and Accessories

For more information on our entire line of innovative dental products visit us at
www.pentron.com or call us at **1.800.551.0283**



simile[®] Nano-Hybrid Composite



The Best Composite At Any Price...

800.551.0283 | www.pentron.com | 203.265.7397

Simile[®] | Artiste[®] | Alert[®] | Flow-It[®] ALC[™] | Restoratives | Impressions | Adhesives | Crown & Bridge

Subject to change or cancellation without notice. Copyright © 2009 Pentron Clinical Technologies, LLC. All rights reserved.

ULT_Rev02

1. Heliomolar is a Registered Trademark of Vivadent Corp.
2. Filtek is a Registered Trademark of the 3M Company. 3. Esthet-X is a Registered trademark of Dentsply International Inc.



...Is The Best Composite At The Best Price!



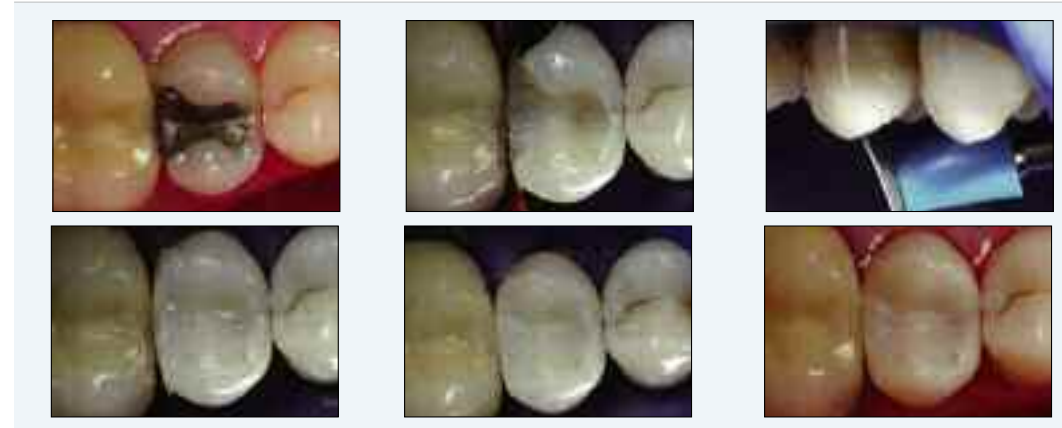
A True Nano-Hybrid Composite.

Simile Nano-hybrid Composite is built on two unique fillers. The first is a high strength barium boro-silicate glass that provides a **backbone of strength, radiopacity and wear resistance.**

But added to it is a unique, silica-zirconia nano-particle which we make using a state-of-the-art solution/gelation (SOL-GEL) process. This process yields a filler particle a mere 0.01 microns

in size – a true nano-particle. It's this unique filler that gives Simile Composite its **extraordinary shine – visible as soon as you handle it.**

Now take these unique fillers and blend them with our exclusive, patented Polycarbonate/Bis-GMA resin and you have perhaps the **most advanced composite available – anywhere.**



Photos courtesy of Dr. Tarun Agarwal

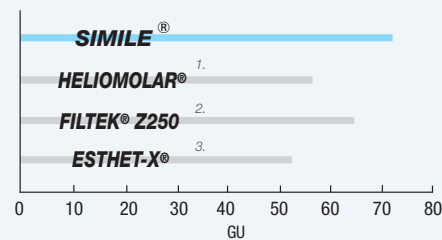
The Best Characteristics ...

As seen by the results of independent testing, Simile Composite looks great. Surface smoothness and surface gloss compare favorably not just to hybrid composite, but to a leading microfill as well. And its resistance to tooth brush abrasion – ten years simulated wear – shows how **Simile Composite's shine is designed to last and last.**

... On The Outside And Inside!

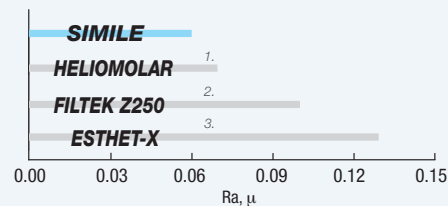
To make a truly universal composite, you can't sacrifice strength for esthetics. The independent testing results shown here testify that **Simile Composite more than holds its own with the leading all purpose composites – some costing twice as much!**

GLOSS AFTER POLISHING



Data: Dr. John M. Powers, Houston, Texas

SURFACE ROUGHNESS (POLISHABILITY)*



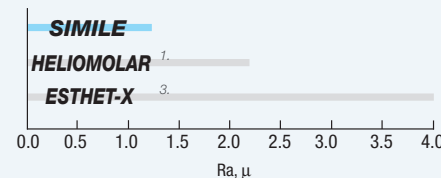
*Surface smoothness measured by profilometry after polishing with Fini™ Polishing Disks

Data: Dr. John M. Powers, Houston, Texas

TOOTHBRUSH WEAR ABRASION

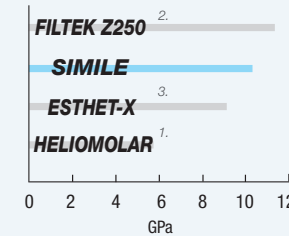
(Average roughness, R subset a, microns)

100K Cycles



Data: Dr. Jeffrey Y. Thompson, Chapel Hill, North Carolina

FLEXURAL MODULUS



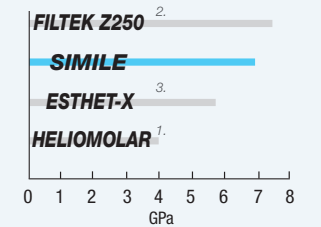
Data: Dr. John M. Powers, Houston, Texas

GENERALIZED WEAR – SURFACE (microns)

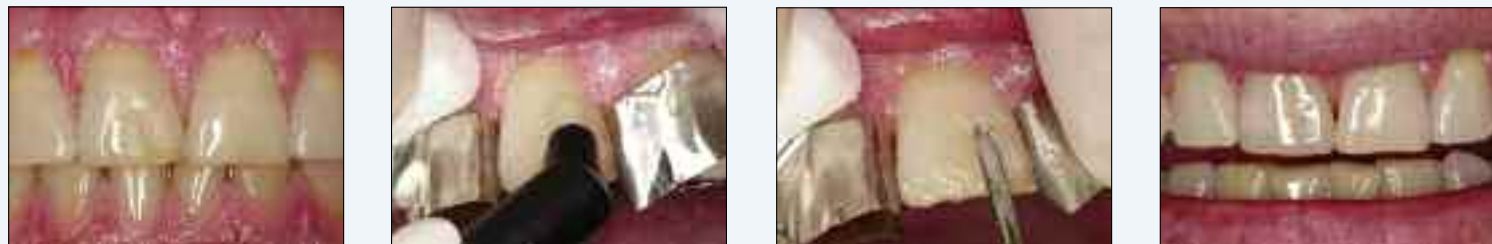


Data: Dr. Shiro Suzuki, Birmingham, Alabama

COMPRESSIVE MODULUS



Data: Dr. John M. Powers, Houston, Texas



Photos courtesy of Dr. Amelia Williams, DDS